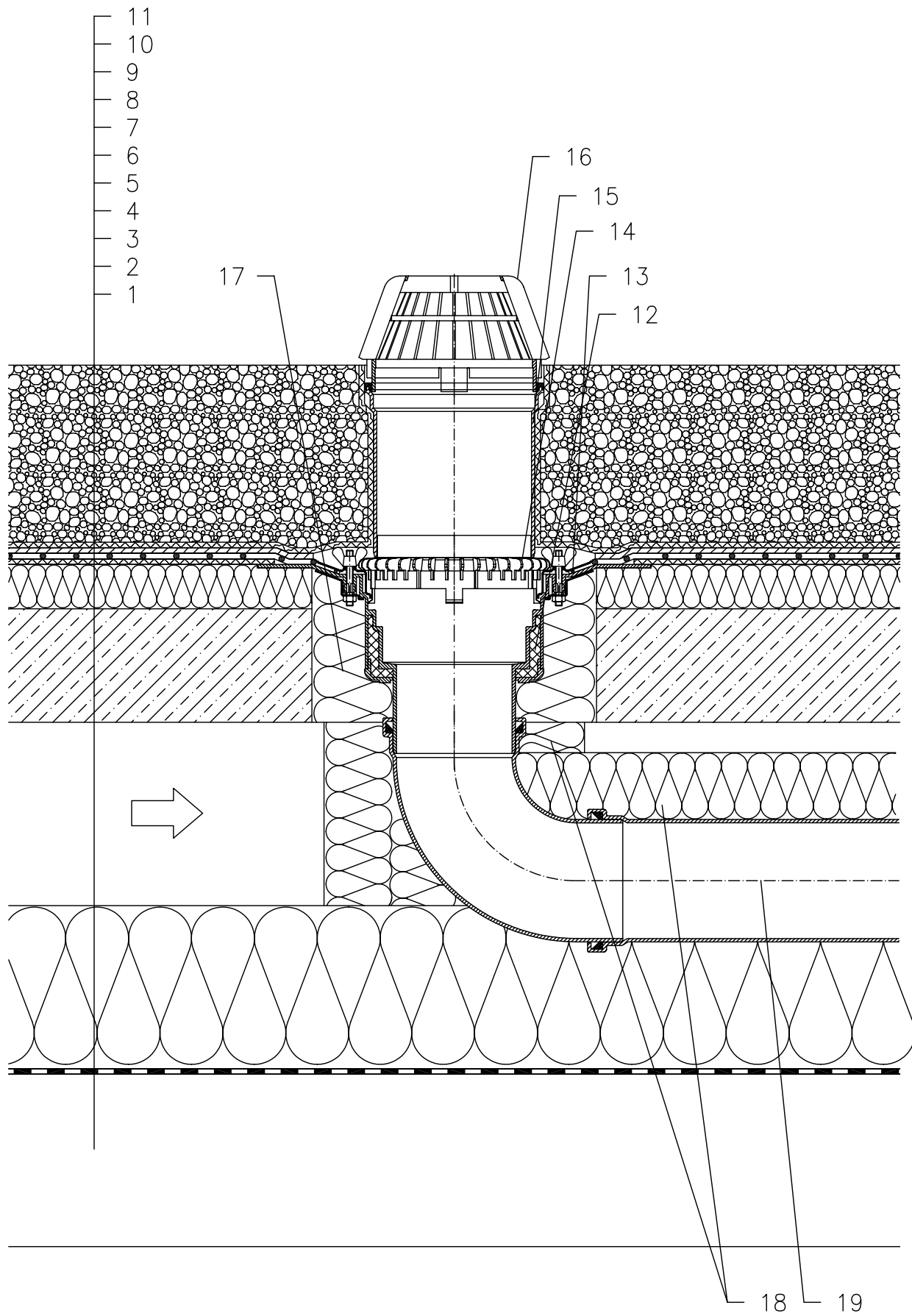


DOUBLE LAYER ROOF – LOADED SYSTEM, CONCRETE SUPPORTING STRUCTURE
PLASTIC FOIL WATERPROOFING



- 1 SUPPORT CONSTRUCTION
- 2 MOISTURE STOP AND TEMPORARY SAFETY WATERPROOFING FROM BITUMEN SHEET OR PLASTIC FOIL
- 3 THERMAL INSULATION
- 4 AIR LAYER
- 5 UPPER CLADDING SUPPORTING STRUCTURE – CONCRETE
- 6 UPPER CLADDING THERMAL INSULATION
- 7 DILATATION LAYER
- 8 PLASTIC FOIL WATERPROOFING LAID LOOSE
- 9 DRAINAGE LAYER
- 10 FILTER LAYER
- 11 STABILIZING LAYER
- 12 FLAT-ROOF DRAIN HL62 WITH INSULATED DRAIN BODY, FLANGE AND STAINLESS STEEL CLAMPING RING
- 13 SEALING PACKING (SEE DETAIL-ACCESSORIES)
- 14 GRAVEL GUARD HL160
- 15 EXTENSION HL350
- 16 DOMED PLASTIC GRATE \varnothing 180 mm (INCL. WITH HL62)
- 17 ASSEMBLY FOAM
- 18 DOWNPIPE THERMAL INSULATION
- 19 DOWNPIPE

NOTE:

FLAT-ROOF DRAIN HL62.1 HEATED (230V, 10–30 WATTS) CAN BE USED.

ASSEMBLY INLET: \varnothing 220 MM, ALTERNATIVELY 240X360 MM