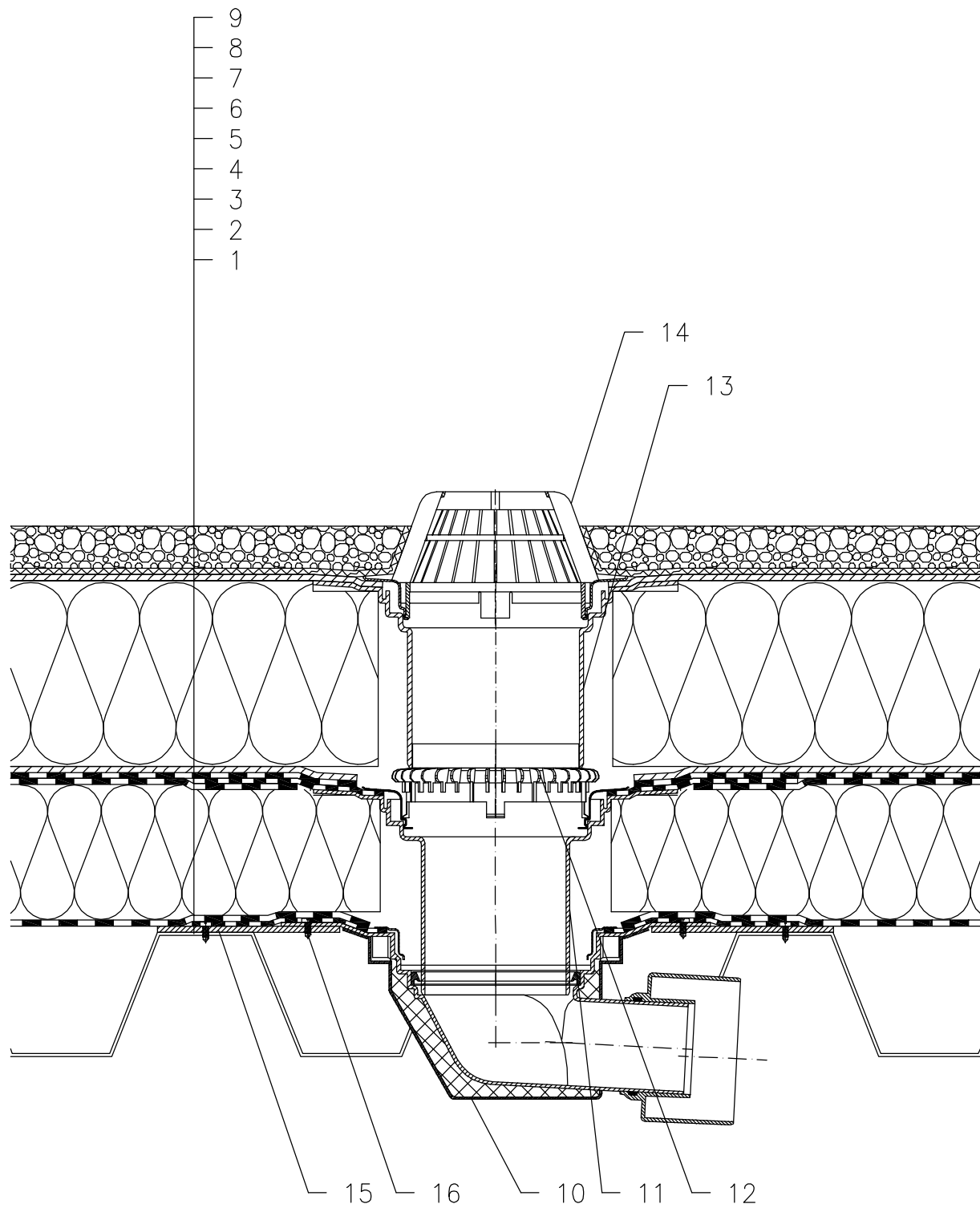


WARM ROOF – LOADED SYSTEM, COMBINED STRUCTURE, WITH MOISTURE STOP,
 TRAPEZOIDAL PLATE SUPPORTING STRUCTURE, BITUMEN SHEET WATERPROOFING



- 1 TRAPEZOIDAL PLATE
- 2 MOISTURE STOP AND TEMPORARY SAFETY WATERPROOFING FROM BITUMEN SHEET
- 3 THERMAL INSULATION
- 4 BITUMEN SHEET WATERPROOFING NON-SOLID GLUED OR LAID LOOSE
- 5 DRAINAGE LAYER
- 6 THERMAL INSULATION FROM XPS
- 7 DRAINAGE LAYER
- 8 FILTER LAYER
- 9 STABILIZING LAYER
- 10 FLAT-ROOF DRAIN HL64H WITH INSULATED DRAIN BODY, WITH FACTORY WELDED BITUMEN MEMBRANE ϕ 500 mm, THICKNESS 4 mm
- 11 EXTENSION HL65H WITH FLANGE AND FACTORY WELDED BITUMEN MEMBRANE ϕ 500 mm, THICKNESS 4 mm
- 12 GRAVEL GUARD HL160
- 13 EXTENSION HL350.1 WITH FLANGE AND WATERPROOFING KIT HL84.0
- 14 DOMED PLASTIC GRATE ϕ 180 mm (INCL. WITH HL64H)
- 15 MOUNTING METAL PLATE
- 16 ANCHOR BOLT

NOTE:

FLAT-ROOF DRAIN HL64.1H HEATED (230V, 10-30 WATTS) CAN BE USED.

ASSEMBLY INLET: ϕ 270 MM

14121B