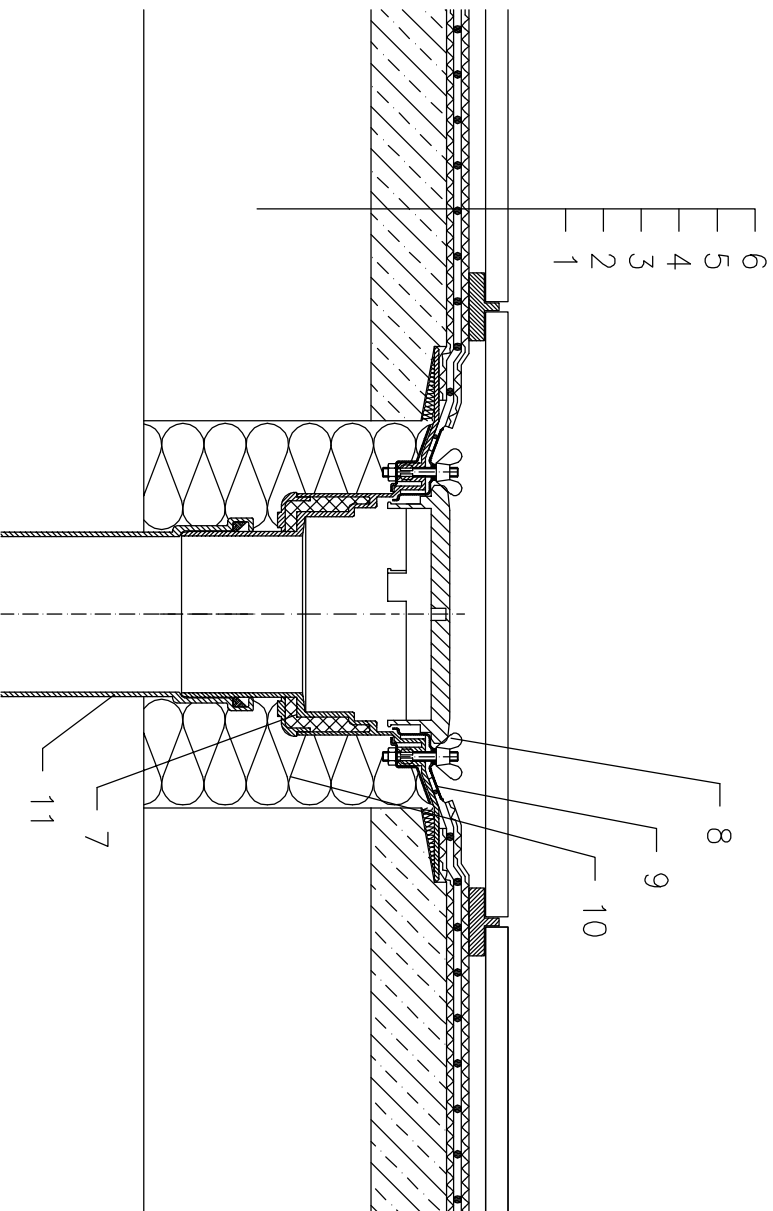


NON-INSULATED – WALKABLE, PAVEMENT ON STANDS, PLASTIC FOIL WATERPROOFING



- 1 SUPPORT CONSTRUCTION
- 2 GRAVITY LAYER
- 3 DILATATION LAYER
- 4 PLASTIC FOIL WATERPROOFING LAID LOOSE
- 5 DILATATION LAYER
- 6 PAVEMENT ON STANDS
- 7 FLAT-ROOF DRAIN HL62 WITH INSULATED DRAIN BODY, FLANGE AND STAINLESS STEEL CLAMPING RING
- 8 FLAT GRATE HL170
- 9 SEALING PACKING (SEE DETAIL-ACCESSORIES)
- 10 ASSEMBLY FOAM
- 11 DOWNPIPE

NOTE:

FLAT-ROOF DRAIN HL62.1 HEATED (230V, 10-30 WATTS) CAN BE USED.

ASSEMBLY INLET: Ø220 MM, ALTERNATIVELY 240X360 MM