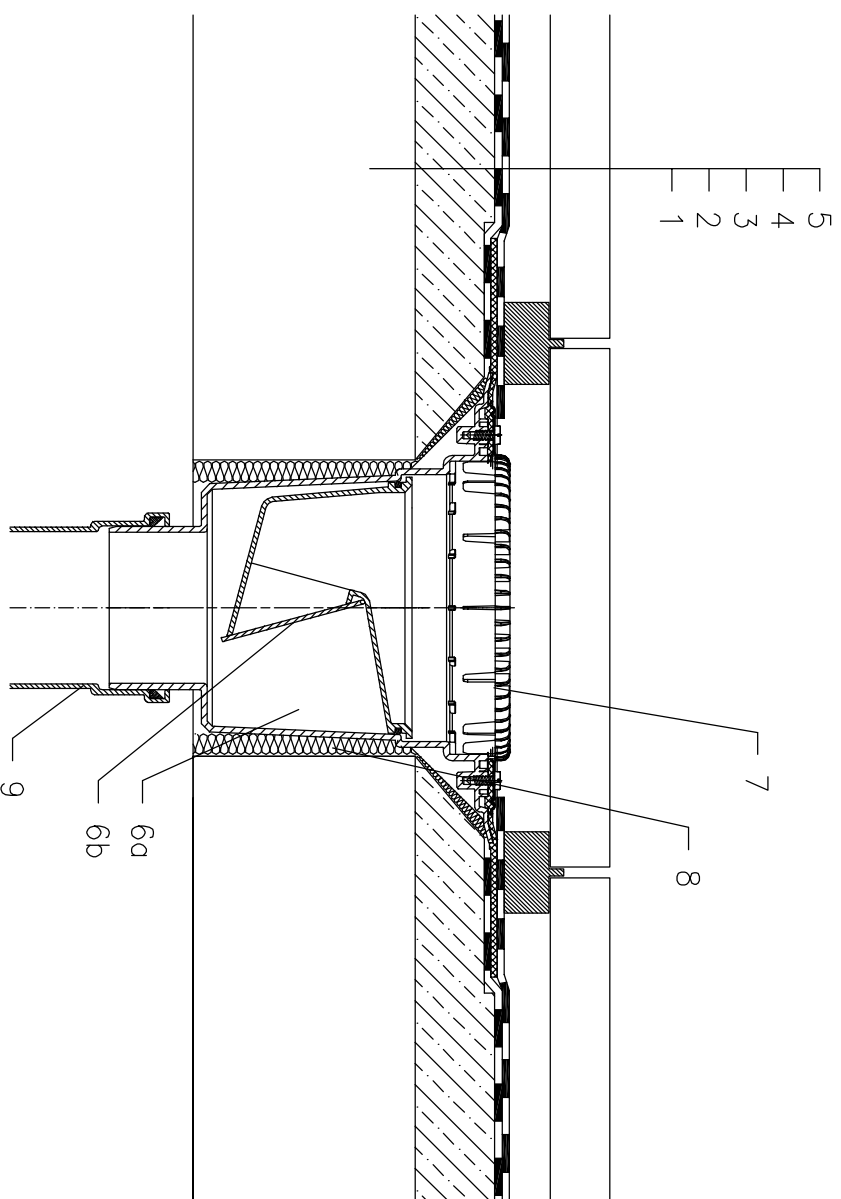


ROOFS WITHOUT THERMAL INSULATION – TERRACE, PAVERS ON STANDS, BITUMEN SHEETS



- 1 SUPPORT CONSTRUCTION
- 2 CONCRETE GRAVITY LAYER
- 3 BITUMEN SHEET WATERPROOFING
NON SOLID GLUED OR LAID LOOSE
- 4 BITUMEN SHEET WATERPROOFING
- 5 PAVERS ON STANDS
- 6a DRAIN BODY HL616HK
WITH BITUMEN MEMBRANE Ø500 mm,
- 6b FROST-PROOF FLAP HL0606.3E
- 7 FLAT LEAF STRAINER HL191
alternative LEAF STRAINER HL195
- 8 ASSEMBLY FOAM
- 9 DOWNPIPE

NOTICE:

TO HEAT THE DRAIN, YOU MAY USE HEATING KIT HL609 WITH SELF-REGULATING HEAT SOURCE 36W/230V. (THE HEATING TAPE MUST BE WRAPPED AROUND THE DRAIN BODY BEFORE INSTALLATION).
RECOMMENDED BOREHOLE DIAMETER IS Ø220mm, WITH HEATING KIT MIN. Ø240mm DURING INSTALLATION TAKE CARE, THAT THE FLANGE POSITION IS ON THE LOWEST LEVEL OF DRAINAGE. WE RECOMMEND, TO SITE IT APPR. 1cm BELOW THE SCREED.
TO AVOID CONDENSATE WATER TAKE CARE OF THERMAL INSULATION ON THE CONSTRUCTION SITE.