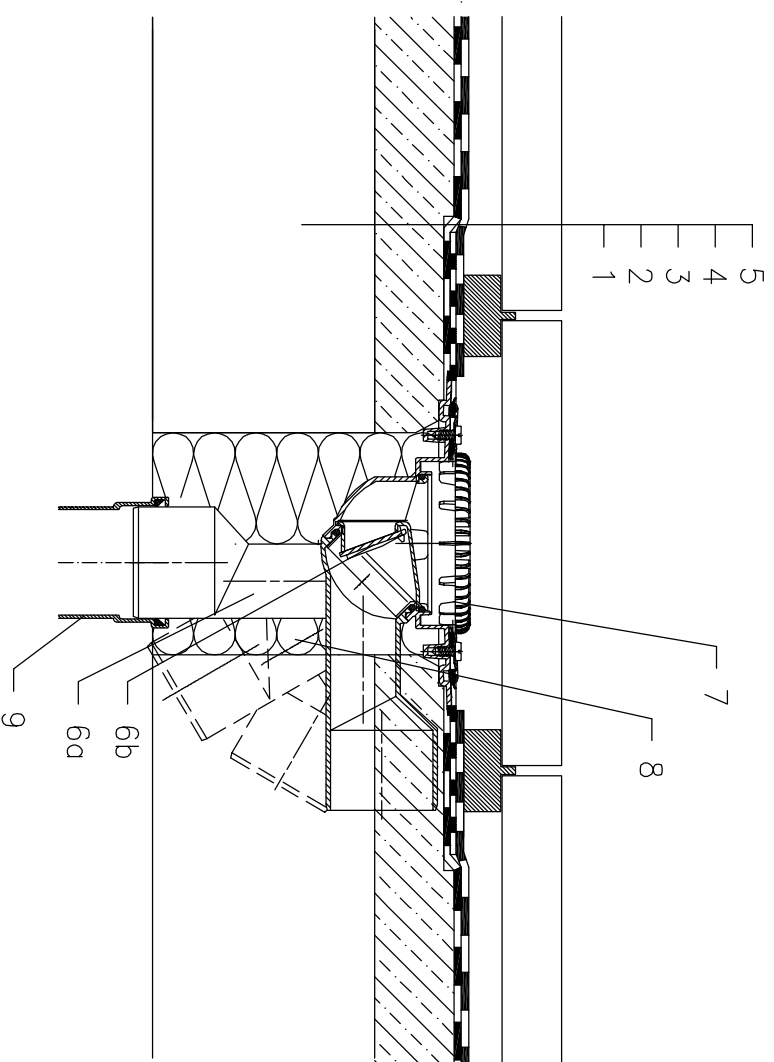


# ROOFS WITHOUT THERMAL INSULATION – TERRACE, PAVERS ON STANDS, BITUMEN SHEETS



- 1 SUPPORT CONSTRUCTION
- 2 CONCRETE GRAVITY LAYER
- 3 BITUMEN SHEET WATERPROOFING  
NON SOLID GLUED OR LAID LOOSE
- 4 BITUMEN SHEET WATERPROOFING
- 5 PAVERS ON STANDS
- 6a DRAIN BODY HL80HK  
WITH BITUMEN MEMBRANE  $\phi$ 400 mm,
- 6b FROST-PROOF FLAP HL080.4E
- 7 FLAT LEAF STRAINER HL181  
alternative LEAF STRAINER HL080.8E
- 8 ASSEMBLY FOAM
- 9 DOWNPIPE

## NOTICE:

TO HEAT THE DRAIN, YOU MAY USE HEATING KIT HL82 WITH SELF-REGULATING HEAT SOURCE 18W/220V. (THE HEATING TAPE MUST BE WRAPPED AROUND THE DRAIN BODY BEFORE INSTALLATION).

RECOMMENDED BOREHOLE DIAMETER IS  $\phi$ 150mm.

DURING INSTALLATION TAKE CARE, THAT THE FLANGE POSITION IS ON THE LOWEST LEVEL OF DRAINAGE. WE RECOMMEND, TO SITE IT APPR. 1cm BELOW THE SCREED.

TO AVOID CONDENSATE WATER TAKE CARE OF THERMAL INSULATION ON THE CONSTRUCTION SITE.