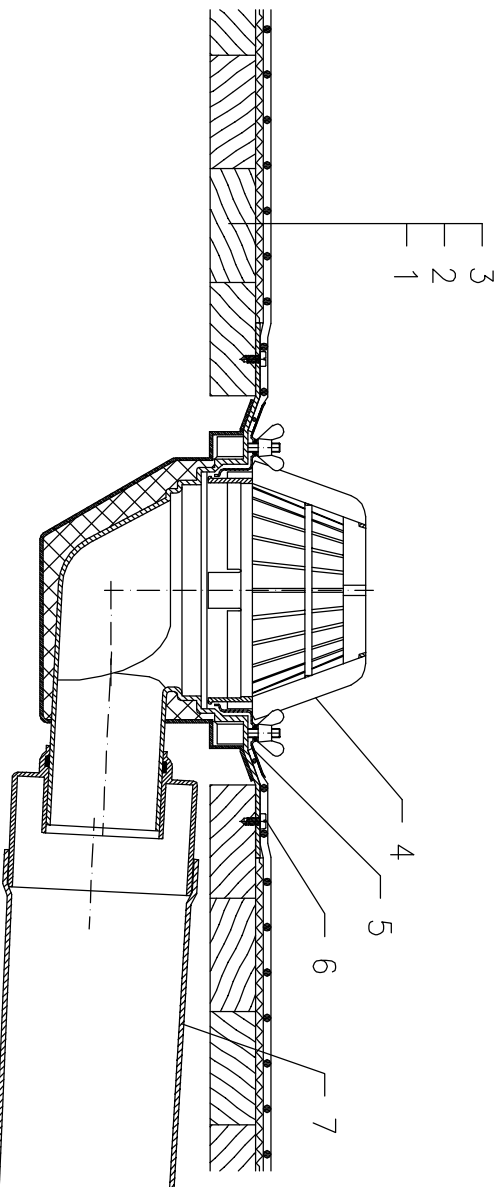


NON-INSULATED – ANCHORED SYSTEM, PLASTIC FOIL WATERPROOFING UNDERLAYER BOARDING



- 1 SUPPORT CONSTRUCTION – BOARDING
- 2 DILATATION AND SEPARATING LAYER
- 3 PLASTIC FOIL WATERPROOFING MECHANICALLY ANCHORED
FLAT-ROOF DRAIN HL64 WITH INSULATED DRAIN BODY,
FLANGE AND STAINLESS STEEL CLAMPING RING
- 4 DOMED PLASTIC GRATE ϕ 180 mm
- 5 SEALING PACKING (SEE DETAIL-ACCESSORIES)
- 6 ANCHOR BOLT
- 7 DOWNPIPE

NOTE:
 FLAT-ROOF DRAIN HL64.1 HEATED (230V, 10-30 WATTS) CAN BE USED.
 ASSEMBLY INLET: 260X360 MM