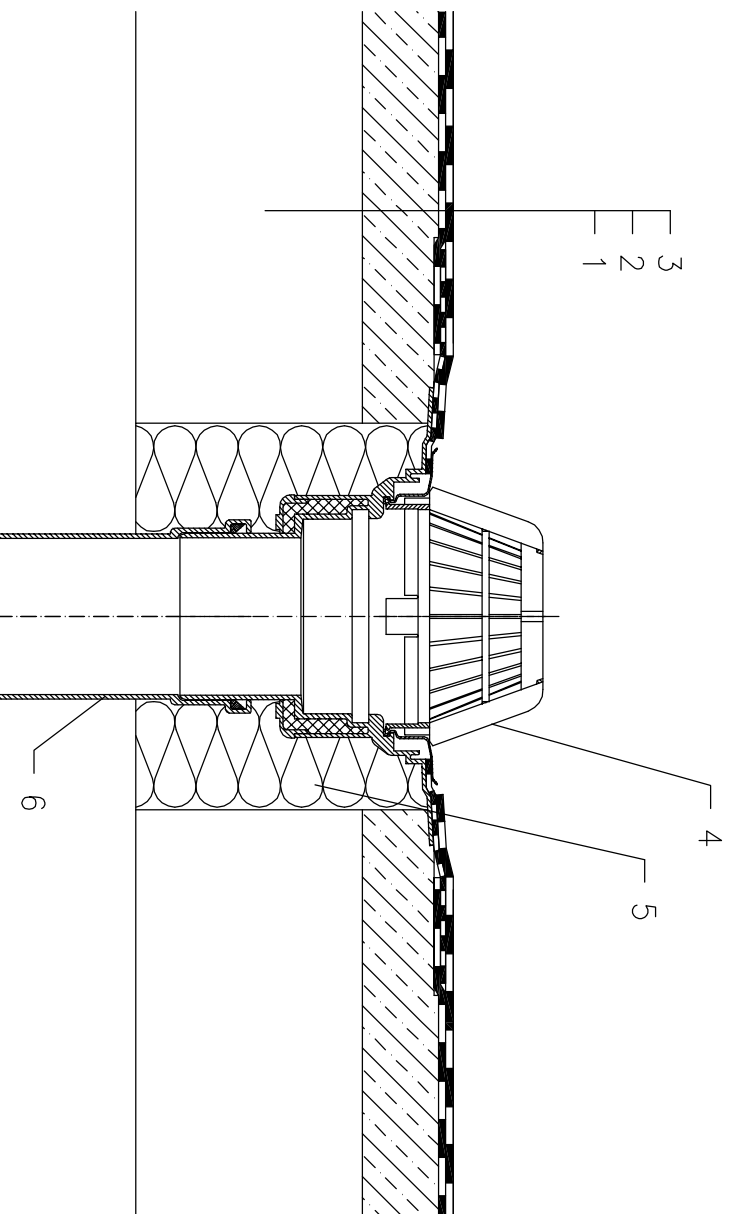


NON-INSULATED – ANCHORED SYSTEM, BITUMEN SHEET WATERPROOFING



- 1 SUPPORT CONSTRUCTION
- 2 GRAVITY LAYER
- 3 BITUMEN SHEET WATERPROOFING LAID LOOSE AND MECHANICALLY ANCHORED
- 4 FLAT-ROOF DRAIN HL62H WITH INSULATED DRAIN BOC WITH FACTORY WELDED BITUMEN MEMBRANE \varnothing 500 mm THICKNESS 4 mm, DOMED PLASTIC GRATE \varnothing 180 mm
- 5 ASSEMBLY FOAM
- 6 DOWNPIPE

NOTE:

FLAT-ROOF DRAIN HL62.1H HEATED (230V, 10-30 WATTS) CAN BE USED.

ASSEMBLY INLET: \varnothing 220 MM, ALTERNATIVELY 240X360 MM