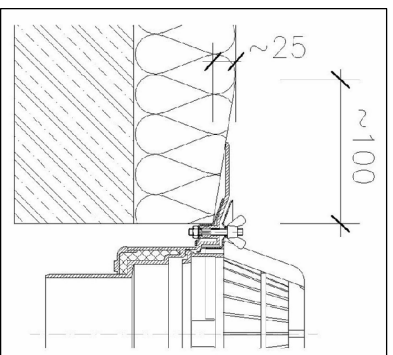


GENERAL COMMENTS REGARDING THE INSTALLATION OF TERRACE DRAINS HL80 (ALTERNATIVE HL310N.2, HL90,HL90.2) AND HL615(.1)(H), HL616(.1)(H)

WHEN INSTALLING THE DRAIN INTO A CONCRETE FLOOR, WE RECOMMEND, TO FIX IT INSIDE THE BOREHOLE WITH POLY-URETHANE FOAM. WITH HORIZONTAL PIPE LAYING IT HAS TO BE FIXED WITH A PIPE CLIP ON THE CONCRETE FLOOR (E.G. HORIZONTAL PIPE LAYING INSIDE OF THE THERMO-INSULATION).

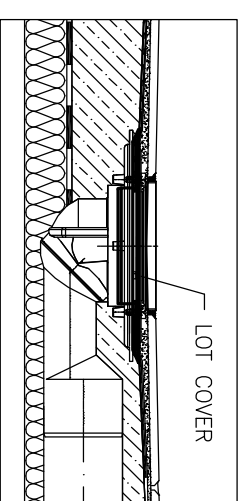


IN CASE THE MOISTURE BARRIER IS USED FOR EMERGENCY DRAINAGE, WE RECOMMEND, TO SET A DRAINAGE LAYER BETWEEN MOISTURE BARRIER AND THERMO-INSULATION. IN THIS CASE – BY USING DRAINAGE RINGS (HL180 FOR DRAINS HL80(H), HL90(.2), HL310N.2 AND HL190 FOR DRAINS HL615(.1)(H)), HL616(.1)(H) – YOU HAVE TO CARE FOR A SUFFICIENT DRAINAGE. ALL HL EXTENSIONS MAY BE ADJUSTED IN HEIGHT BY SIMPLPE CUTTING.

WHEN CONNECTING TO WATERPROOFING LAYERS, WE RECOMMEND, TO CUT OUT A COLLAR ACCORDING TO THE MODEL, WHICH MAY BE DOWNLOADED IN THE CHAPTER „ATTACHEMENTS“. FOR BITUMENE LAYERS PLEASE USE OUR ARTICLES WITH „H“, LIKE HL80H, HL85H, HL615(.1)H, HL616(.1)H, HL618H WITH PRE-SEALED BITUMENE FLANGE. IF YOU HAVE ALREADY INSTALLED A NORMAL DRAIN WITHOUT BITUMENE COLLAR, THIS MAY BE UPGRADED WITH HL SEALING SETS:
 HL83.H FOR DRAINS HL80, HL90, HL90.2 AND HL310N.2
 HL86H FOR DRAINS HL615(.1), HL616(.1) AND HL618.
 ATTENTION: THIS SOLUTION IS ONLY FOR TROUBLESHOOTING.

GENERAL COMMENTS REGARDING THE INSTALLATION OF TERRACE DRAINS HL80 (ALTERNATIVE HL310N.2, HL90,HL90.2) AND HL615(.1)(H), HL616(.1)(H)

FOR CONNECTION TO LIQUID WATERPROOFINGS WE RECOMMEND DRAINS WITH POLYMERE CONCRETE COLLARS (HL80C, HL85NC...) OR STANDARD DRAINS (HL80, HL90, HL90.2, HL310N.2) IN COMBINATION WITH OUR SEALING SET HL83.M (MONTAPLAST B LAYER). FOR STANDARD DRAINS HL615 OR 616 PLEASE USE SEALING SET HL86.M (WITH MONTAPLAST B LAYER).



- FOR DRAINS OF SERIES HL80, HL90(.2), HL310N.2, HL85N
- HL83.O SEALING KIT FOR WATERPROOF LAYERS
- HL83.P SEALING KIT FOR PVC LAYERS
- HL83.H SEALING KIT FOR BITUMENE LAYERS
- HL83.M SEALING KIT FOR LIQUID WATERPROOFINGS
- FOR DRAINS OF SERIES HL615(.1), HL616(.1), HL618
- HL86.O SEALING KIT FOR WATERPROOF LAYERS
- HL86.H SEALING KIT FOR BITUMENE LAYERS
- HL86.M SEALING KIT FOR LIQUID WATERPROOFINGS

MAXIMUM FLOW CAPACITIES OF OUR DRAINS YOU WILL FIND IN OUR WEB-SITE OR IN THE CATALOGUE. AT FLAT ROOFS WITH GRAVEL SURFACE YOU SHOULD BUILD A GRAVEL-CIRCLE AROUND THE DRAIN WITH A GRAIN SIZE OF 16-32mm. THIS AVOIDS, THAT GRAVEL IS WASHED INTO THE DRAIN.